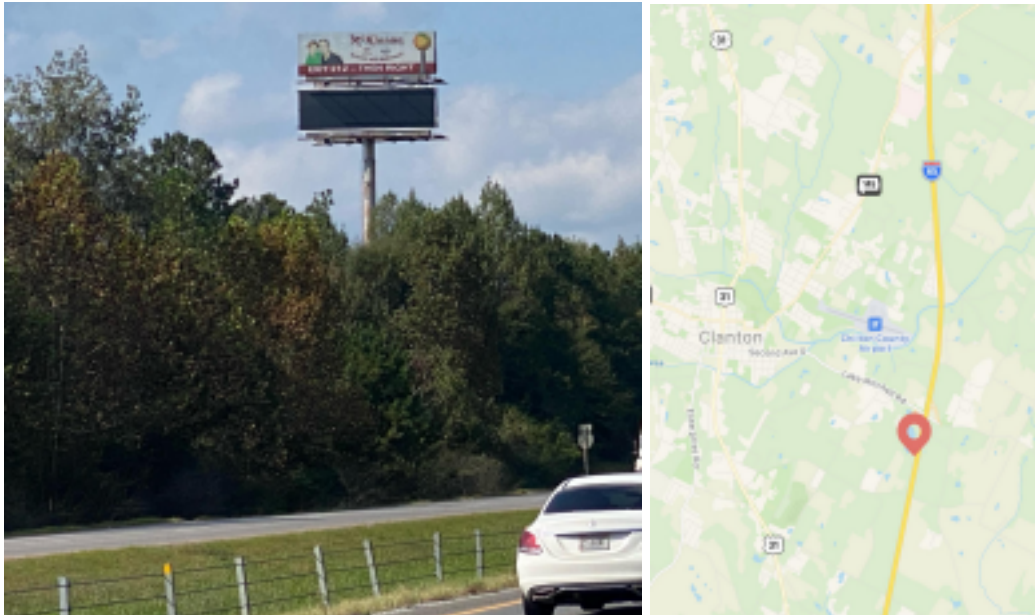




Double Stack Bulletin board 1-65 milepost 208

This 10'6" x 36' double stacked bulletin board located on I-65 North. This board is designed to reach commuters from Montgomery to Clanton, Calera and Birmingham and many local communities. At milepost 208 Clanton.



Location: 1-65 North side, Left read **RATE CARD** Facing: North side, facing South 4-week Cost: \$750 Net
Size: 10'6" x 36" Banner Cost: \$700 Impressions: 93,299 Erection Cost: \$450 TAB Panel ID: 30991130
Latitude: 32.834858 ALDOT Traffic Count: 62, 581 vehicles daily Longitude: -86.592781

DEMOGRAPHICS:

- The city of Clanton is located in Chilton County Alabama, U.S. It is a part of the Birmingham - Hoover - Cullman Combined Statistical area. Nestled between two major thoroughfares, Interstate 65 and U.S. Highway 31.
- The city population is 9,034
- The Alabama city businesses are such as banking, entertainment, healthcare, agriculture and historical sites.
 - Nearby Lay Lake Dam and Mitchell Dam became Alabama Power's first two dams in the state.
- Peach production remains an important industry in Chilton County, but the area is also known for other fruit and vegetable crops, cattle, poultry and cotton are also important economically.

Sha Outdoors, LLC
P.O. Box 33 Eldridge, AL 35554
205.495.0043